

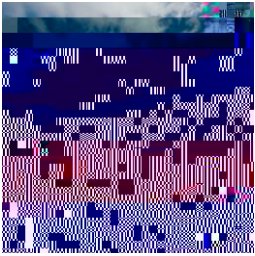
Maggie's Key Facts



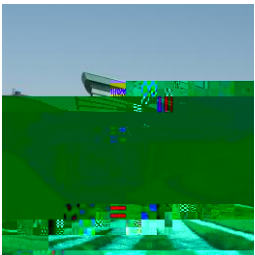
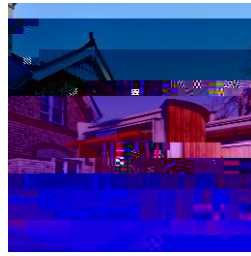
“There aren't many places you can walk into and speak to a qualified and trained professional straight away. No waiting. Time on an ambulance never does seem to be an issue at Maggie's.”



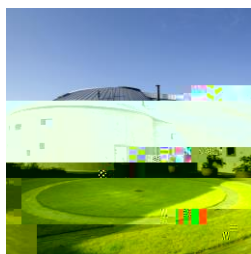
We have 24 centres in the UK a growing international network. They are:



Maggie's Edinburgh (designed by Murgoh Architects, landscaping by Emma Keswick), in the



grounds of Nottingham City Hospital, Nottingham, opened in November 2011.



Maggie's Swansea (designed by Kisho Kurokawa Architects with Garbers & James, landscaping by Kim Wilkie) in the grounds of Clackston Hospital, Swansea, opened in December 2011.



currently an interior centre, set to be moved in October 2012.

*See **Centres in development** on page 3.

International

Our support in 2023

In 2023, we had more than 45,000 visits to our 24 cancer centres, 45,000 were visits from new people with cancer. Nearly 35,000 were visits from people newly caring for someone with cancer.

*visits refer to support facilitated by our programme staff and includes face to face, on the phone and online

Key facts

We have nearly 28 years of experience providing free cancer support and information in

Built in the grounds of NHS cancer hospitals, the centres are warm and welcoming and are run by expert staff who help you live well with cancer.

Maggie's now has 24 centres in the UK. There are also three international centres offering Maggie's support.

The majority of Maggie's voluntary donations.

Maggie's Her Majesty The Queen

Maggie's Patron in Chief

Chief Executive, Laura Lee was awarded a Damehood in 2019 for her services to people with cancer.

For more information

Please visit maggies.org/about-us

Endorsed by CEOs of every NHS

Charter for Maggie's

"Having Maggie's alongside our cancer centre means that our patients have the best possible psychological and practical support, which enhances the clinical care we provide.

Maggie's is an essential part of the cancer pathway and every cancer hospital needs to have one"

